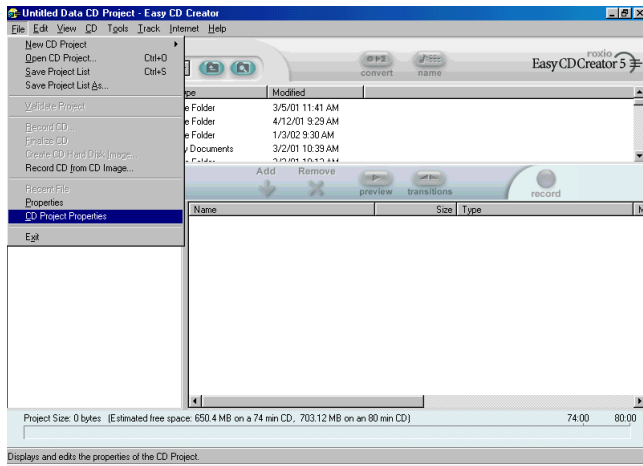
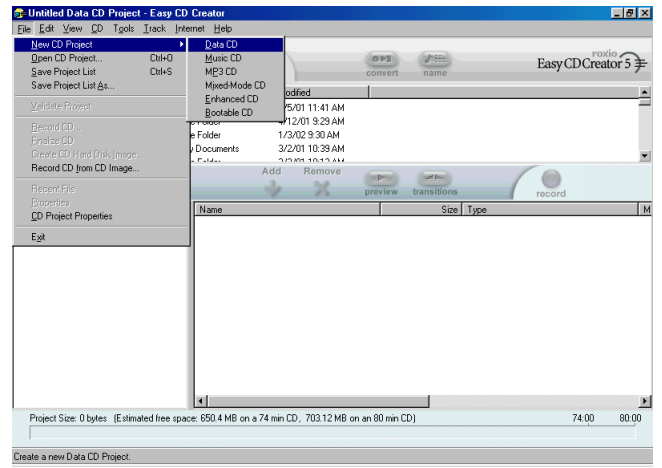
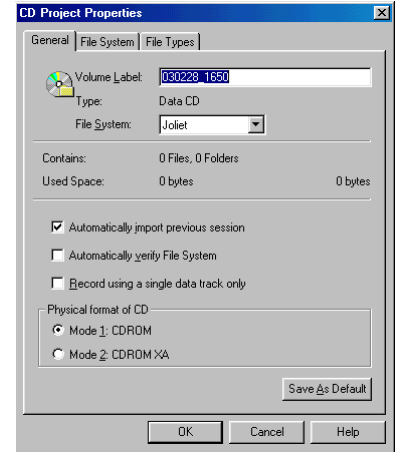


Create a new DATA cd, see your Ez CD Creator Instruction Manual for more information on setting up a new CD job.



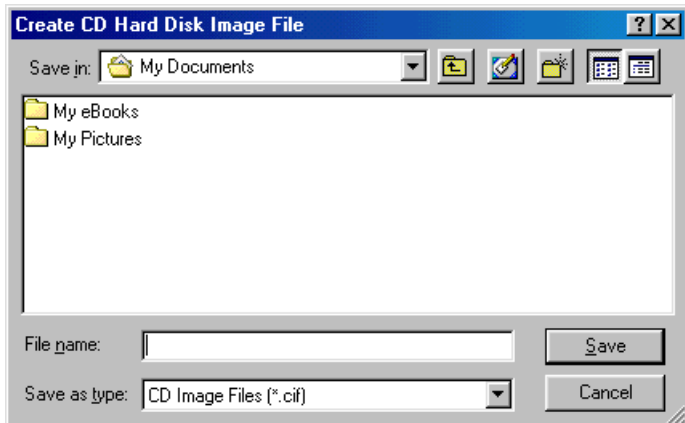
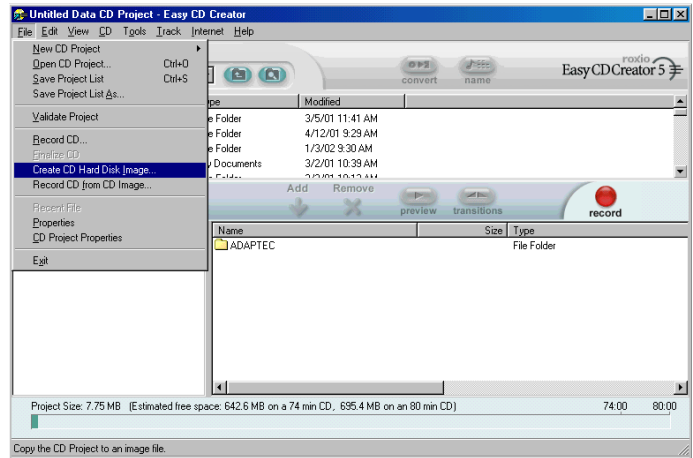
Select CD Project Properties from the FILE menu (example on left).

Choose Mode 1: CD-ROM for the physical format of your CD, this will create a CD that is more compatible with some players than a Mode 2 / XA CD. If the option is grayed out, Mode 2 XA is required to produce your CD, in that case use Mode 2 / XA.



\* We also recommend checking the Automatically verify File System box as well as the Record using a single data track only box.

Next, choose "Create CD Hard Disk Image..." from the FILE menu. This will allow you to save your cd as an image file.



Select a name for your file and a location the interface that appears. Be Sure to choose \*.cif in the "Save as type" box below the file name selection box. Be sure to choose a location and a name that are easy to identify.

After Creating the image file, choose Record CD from CD Image. From the FILE menu, and select the image file you created. Write a cd and test it. If it is ok, send us the image and we will be able to reproduce your cd exactly.